

# M10 Solar Module Series

## (20 Watt to 80 Watt)

Our Mono Crystalline M10 Series product widely use in Solar Integrated Street Light (Solar all in one street light), also this product suites with MPPT charge controller.

- Small Home Lighting System
- Solar Street Light
- Solar Torch
- Mobile Charger
- Solar Telecom solution
- Electrical Vehicle Charging station
- Roof Top Off Grid solution
- Traffic control System
- Solar Water Pumps

### Electrical Characteristics

Module Type	S2EMBB0 20	S2EMBB0 30	S2EMBB0 40	S2EMBB0 50	S2EMBB0 60	S2EMBB0 75	S2EMBB0 80
Pmax (W)	20.00	30.00	40.00	50.00	60.00	75.00	80.00
Vmax (V)	19.01	19.01	19.01	20.20	19.01	17.82	19.01
I <sub>max</sub> (A)	1.06	1.58	2.11	2.53	3.17	4.22	4.22
Voc (V)	21.89	21.89	21.89	23.26	21.89	20.52	21.89
Isc (A)	1.13	1.69	2.25	2.70	3.38	4.50	4.50
Module Efficiency (%)	>16.00	>17	>17	>18	>18	>19	>19

### Mechanical Characteristics

L X W X T	570X220X 30 / 35	800X220X 30 / 35	570X400X 30 / 35	700X400X 30 / 35	435X765X 30 / 35	680X580 X 30 / 35	550X765X 30 / 35
Mounting Hole (Y)mm	300	300 / 500	300	300 / 500	300	300 / 500	300
Mounting Hole (X)mm	188	188	368	368	733	548	733
Cell Per Module/Arrangement	32 / 16X2	32 / 16X2	32 / 16X2	34 / 17X2	32 / 8X4	30 / 10X3	32 / 8X4
Cell Type	Mono PERC-M10						
Front Cover (Material/Thickness)	tempered & Low Iron Glass , 3.2 / 4.0mm						
Encapsulate	Ethylene Vinyl Acetate						
Frame	Anodized Aluminium						
JB	IP65 Rated with bypass diode						
Connector	As per Customer Requirement (Optional)						
Cable	As per Customer Requirement (Optional)						

\*Standard Test condition (STC): 1000W/m<sup>2</sup> irradiance, Air Mass 1.5 and 25°C cell temperature. Measuring Uncertainty +/-3%

Refer installation manual instructions & sun2earth warranty statement for terms and condition.

Sun2Earth Solar reserves the right to change the specifications without prior notice.

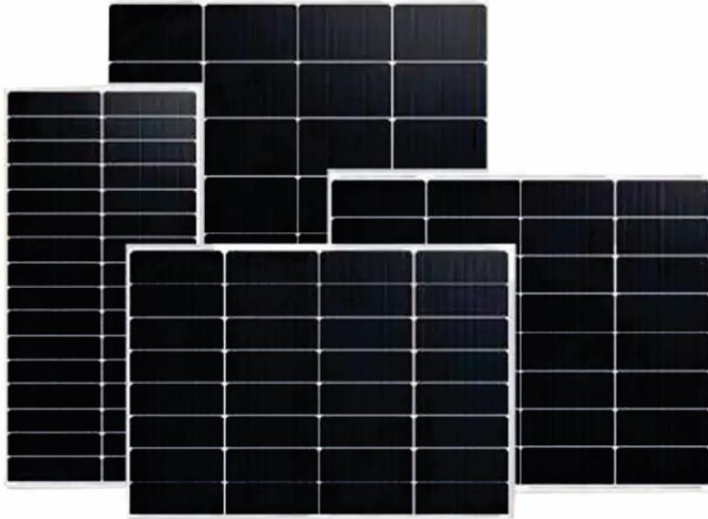
# M10 Solar Module Series

## (100 Watt to 270 Watt)

### Key Feature:

- 1) Excellent module efficiency Solar cell efficiency up to 23.4% Module efficiency Grater than 19%.
- 2) High performance Higher PV Energy yield even under low light and cloudy conditions
- 3) Reliability Premium quality raw materials and advanced manufacturing processes guarantees the reliability of our modules
- 4) Positive tolerance of up to 3% delivers higher output reliability for our all modules.
- 5) EL Tested (ELECTRO LUMINESCENCE) 100% EL double inspection
- 6) PID resistant and tree of snail trails Increased module robustness to minimize micro-cracks
- 7) Resistant: PID Resistant

Electrical Characteristics						
Module Type	S2E MBB100	S2E MBB120	S2E MBB160	S2E MBB225	S2E MBB240	S2E MBB270
Pmax (W)	100.00	120.00	160.00	225.00	240.00	270.00
Vmax (V)	20.20	19.01	19.01	35.76	38.02	42.77
I <sub>max</sub> (A)	5.07	6.34	8.45	6.37	6.34	6.34
Voc (V)	23.26	21.89	21.89	41.16	43.78	49.25
I <sub>sc</sub> (A)	5.40	6.74	9.00	6.78	7.65	6.75
Module Efficiency (%)	>19	>19	>19	>20	>20	>20
Mechanical Characteristics						
L X W X T	700X765 X 30 / 35	800X765X 30 / 35	1055X765 X35	1450X765 X35	1540X765 X35	1169X113 3X35
Mounting Hole (Y)mm	300 / 500	300 / 500	300 / 750	300 / 750	300 / 750	300 / 750
Mounting Hole (X)mm	733	733	733	733	733	1103
Cell Per Module/Arrangement	68 / 17X4	32 / 8X4	64 / 16X4	60 / 15X4	64 / 16X4	72 / 12X6
Cell Type	Mono PERC-M10					
Front Cover (Material/Thickness)	tempered & Low Iron Glass , 3.2 / 4.0mm					
Encapsulate	Ethylene Vinyl Acetate					
Frame	Anodized Aluminium					
JB	IP65 Rated with bypass diode					
Connector	As per Customer Requirement (Optional)					
Cable	As per Customer Requirement (Optional)					
*Standard Test condition (STC): 1000W/m <sup>2</sup> irradiance, Air Mass 1.5 and 25°C cell temperature. Measuring Uncertainty +/-3%						
Refer installation manual instructions & sun2earth warranty statement for terms and condition.						
Sun2Earth Solar reserves the right to change the specifications without prior notice.						



### Reach Us:

[www.sun2earth.co.in](http://www.sun2earth.co.in)

Mail: [sales@sun2earth.co.in](mailto:sales@sun2earth.co.in), [epc@sun2earth.co.in](mailto:epc@sun2earth.co.in)

+91-8866224445, 67, 82, 36

### Manufacturing Facility Address:-

BLOACK NO. 331, ENA TUNDI ROAD, NEAR ENA CHAR RATA, ENA,  
TA. PALSANA, DIST. SURAT - 394310.

### Marketing and Registered Office Address:-

3013, World Trade Center, Near Udhana Darwaja  
Ring Road, Surat-395002.